

APP CRS	Rwy Idg	<b>4800</b>
<b>081°</b>	TDZE	<b>913</b>
	Apt Elev	<b>913</b>

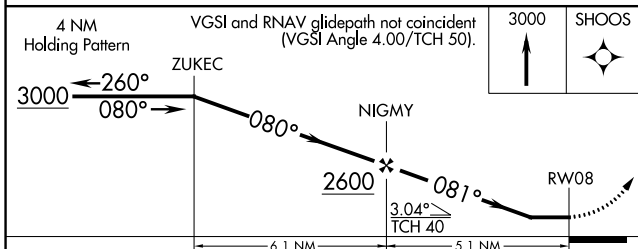
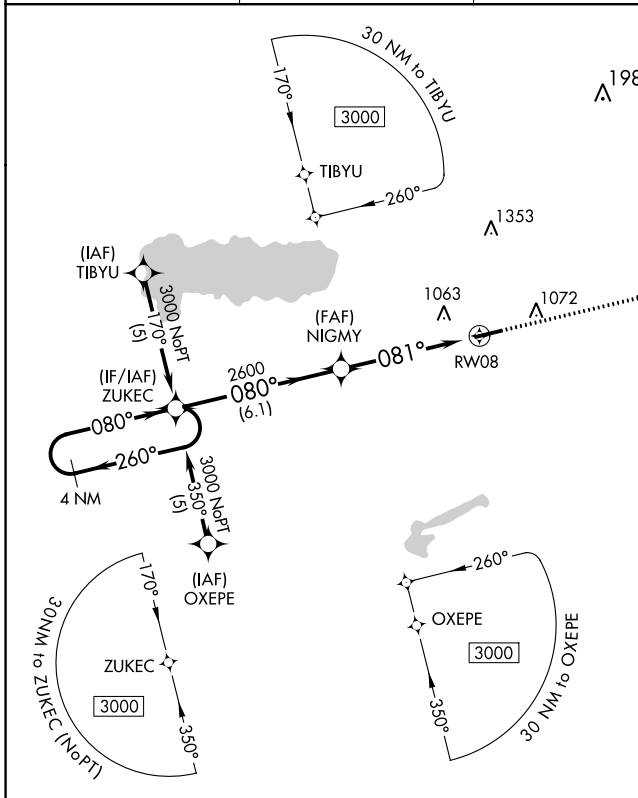
# RNAV (GPS) RWY 8

NEIL ARMSTRONG (AXV)

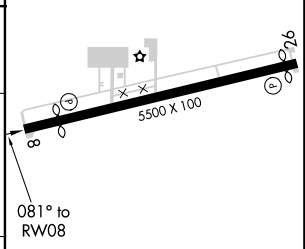
**NA** DME/DME RNP-0.3 NA. Night landing: Rwy 8 NA. Helicopter visibility reduction below 1 SM NA. When local altimeter setting not received, use Lima altimeter setting and increase all MDA 60 feet, increase LNAV Cat C visibility ¼ mile.

MISSED APPROACH: Climb to 3000 direct SHOOS and hold.

AWOS-3 <b>128.325</b>	COLUMBUS APP CON <b>118.425 294.5</b>	UNICOM <b>122.8 (CTAF)</b>	<b>122.7 0</b>
--------------------------	--	-------------------------------	----------------



ELEV 913	TDZE 913
----------	----------



CATEGORY	A	B	C	D
LNAV MDA	1380-1	467 (500-1)	1380-1¼ 467 (500-1¼)	NA
CIRCLING	1400-1 487 (500-1)	1440-1 527 (600-1)	1440-1½ 527 (600-1½)	NA

MIRL Rwy 8-26 0  
REIL Rwy 8 and 26 0

EC-2: 08 NOV 2018 to 06 DEC 2018

EC-2: 08 NOV 2018 to 06 DEC 2018