

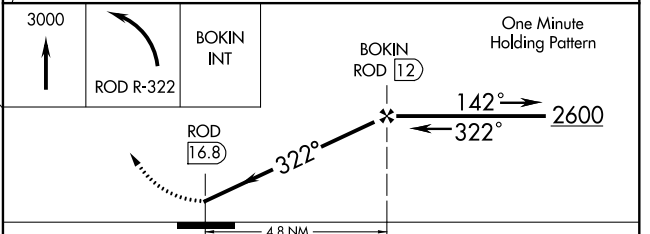
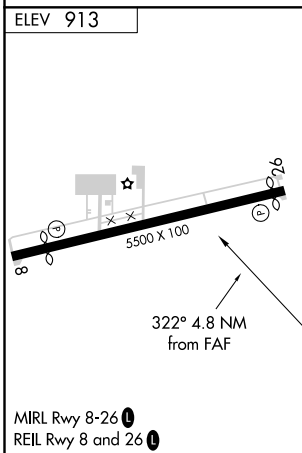
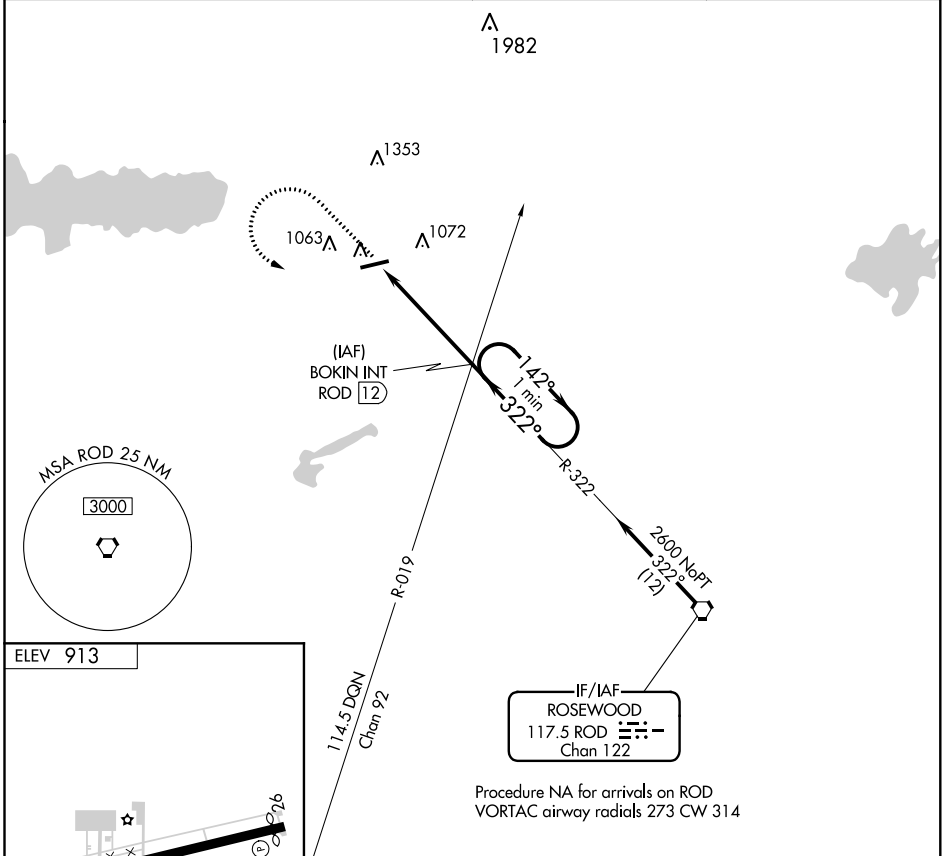
VORTAC ROD 117.5 Chan 122	APP CRS 322°	Rwy Idg TDZE Apt Elev	N/A N/A 913
---	------------------------	-----------------------------	--

VOR-A
NEIL ARMSTRONG (AXV)

⚠ When local altimeter setting not received, use Lima altimeter setting and increase all MDA 60 feet. Night landing: Rwy 8 NA. Helicopter visibility reduction below 1 SM NA.

⚠ NA MISSED APPROACH: Climb to 3000 then left turn on ROD VORTAC R-322 to BOKIN INT/ ROD 12 DME and hold.

AWOS-3 128.325	COLUMBUS APP CON 118,425 294.5	UNICOM 122.8 (CTAF)	122.7 0
--------------------------	--	-------------------------------	-----------------------



FAF to MAP 4.8 NM						
Knots	60	90	120	150	180	
Min:Sec	4:48	3:12	2:24	1:55	1:36	
CATEGORY	A		B		C	D
CIRCLING	1500-1		587 (600-1)		1500-1½ 587 (600-1½)	NA

EC-2: 08 NOV 2018 to 06 DEC 2018

EC-2: 08 NOV 2018 to 06 DEC 2018